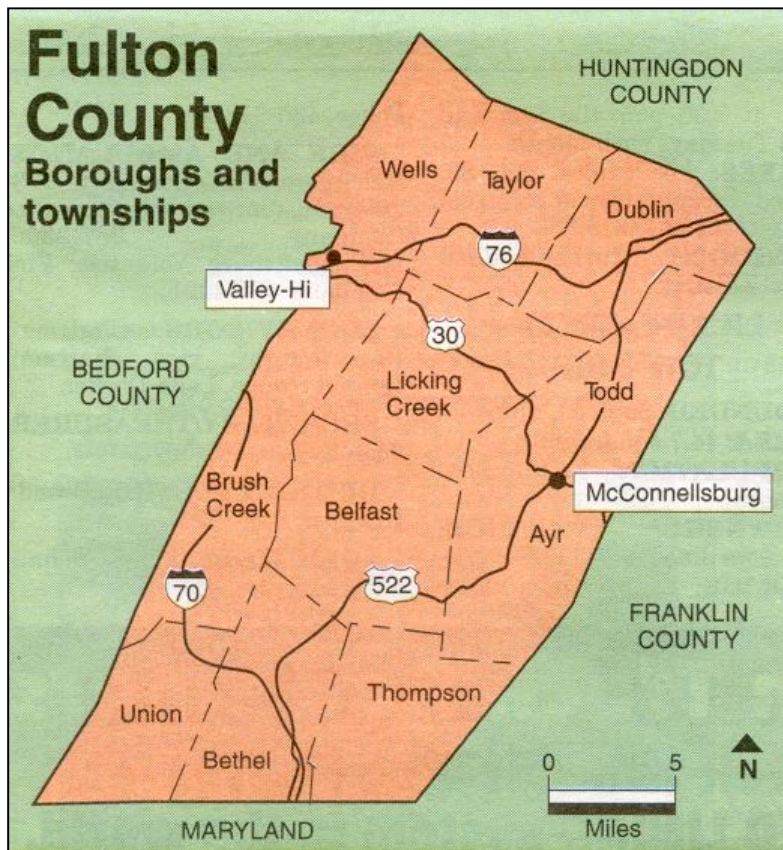


FULTON COUNTY SERVICES FOR CHILDREN

2010 ANNUAL REPORT

***(Includes Human Services Administration
2010 Annual Report)***



FULTON COUNTY BOARD OF COMMISSIONERS
Bonnie Mellott Keefer, Chairman
David R. Hoover II
Craig C. Cutchall

FULTON COUNTY SERVICES FOR CHILDREN
FULTON COUNTY HUMAN SERVICES ADMINISTRATION

Jean E. Snyder, Director

JANUARY, 2011
FULTON COUNTY SERVICES FOR CHILDREN
2010 ANNUAL REPORT

**S
E
R
V
I
C
E
S

F
O
R

C
H
I
L
D
R
E
N**

Agency Staff

Jean E. Snyder	Director
Deboraha Pheil	Consultant
Christine McQuade	Casework Supervisor (Intake)
Stephanie Branche	Casework Supervisor (Ongoing)
Karri Downes	Caseworker 2
Angela Ciccarelli	Caseworker 2
Cindy Sanbower	Caseworker 2
Amanda Abbey	Caseworker 2
Cara Barnes	Caseworker 2
Denise Dunlap	Caseworker 2
Marilyn Lazarus	Fiscal Technician
Nancy Shafer	Clerk/Typist
Dusteny Bard	SWAN LSI Paralegal

Advisory Board Executive Committee

Inez Eddy	President
Cindy Fraker	Vice-president
Marie Shimer	Secretary

Support Staff (supporting agency and/or children & families)

Stanley J. Kerlin, Esq.	Agency Solicitor
Lynn Y. MacBride, Esq.	Guardian Ad Litem
Deborah Dresser Neiderer, Esq.	Assistant Guardian Ad Litem

Elected Officials

Commissioners	
Bonnie Mellott Keefer	Fulton County Commissioner, Chair
David R. Hoover II	Fulton County Commissioner
Craig C. Cutchall	Fulton County Commissioner

Judges, Court of Common Pleas, 39th Judicial District

Honorable Douglas W. Herman	President Judge
Honorable Richard J. Walsh	Judge
Honorable Carol L. Van Horn	Judge (FCSC Administrative Judge)
Honorable Shawn D. Meyers	Judge
Honorable Angela R. Krom	Judge

TABLE OF CONTENTS

FULTON COUNTY SERVICES FOR CHILDREN

	Page
Staff/staff support.....	ii
Demographics	1
Program overview/goals	1
Population served.....	2
Jurisdiction.....	2
Agency structure/operation	3
Unit descriptions	3
Intake unit	4
Ongoing unit.....	7
Placement table.....	10
Court hearings	11
Collaboration w/ professional colleagues.....	12
Staff training	20
Professional development.....	20
APPENDICES	22
Fiscal Analyses	23
Truancy Intervention Protocol	28
FGDM Referrals/conferences.....	29
FCSC organizational chart	30
HSA organizational chart.....	31
HSA annual report	32
Franklin/Fulton MH/MR.....	32
Franklin/Fulton Drug & Alcohol.....	34
Tuscarora Managed Care.....	35
HSDF	35
Homeless Assistance	36
Communities that Care.....	36

DEMOGRAPHICS

Fulton County is an eighth (8th) class county located in south-central Pennsylvania in the Cumberland Valley. Fulton County is a rural community covering an area of 438 square miles. The County has two (2) boroughs (McConnellsburg, and Valley-Hi) and eleven (11) townships (Ayr, Belfast, Bethel, Brush Creek, Dublin, Licking Creek, Taylor, Thompson, Todd, Union and Wells).

Fulton County is 100% rural and is served by three (3) school districts (Central Fulton, Forbes Road, Southern Fulton and two parochial schools).

According to the 2009 U.S. Census- estimate, the total Fulton County population is 14,852 (which is a 4% increase over the 2000 Census number). There are approximately 3,416 children/youth under the age of 18 in Fulton County (which equals 22% of the total population.)

The County's population by race and ethnicity includes: 97.5% Caucasian, 1.3% African American and 0.6% Hispanic/Latino. Fulton County has 7,377 housing units with a total of 5,660 households. Median household income in Fulton County is \$46,314. Approximately 12.9% of the County's population lives below the federal poverty level.

Fulton County has had double digit unemployment in both 2009 and 2010 and has had the 66th (out of 67 counties) highest unemployment rate in the state since June 2009.

PROGRAM OVERVIEW AND GOALS

Fulton County Services for Children (FCSC) is the local public child welfare agency that has responsibility for ensuring that the children of Fulton County have a safe, permanent living arrangement that assures that they are receiving the essentials of life and an opportunity to achieve their maximum potential in growth and development.

All families have problems from time to time. Most caretakers who receive services from FCSC have not abused their children and accept support services voluntarily. However, when services must be mandated, it is with the hope of engaging families to realize and accept the value of the imposed intervention. With support and guidance, even the most difficult problems can be resolved.

The role of child welfare is to protect children and to preserve the family unit; however, it defines itself. We believe that children do best in their own homes; and that it is a parent's right to raise children according to their own value system, provided the child's physical, emotional, and social needs are met. Government intervention is justified when the family cannot, or will not, provide for the child's safety and/or basic needs. Placement of a child by child welfare can only occur if ordered by the Juvenile Court.

We believe that every child has a right to:

- be safe and secure in their home
- be provided with food, clothing, shelter, and medical care
- be loved and understood
- a good education
- have appropriate role models
- be advocated for by the community

Child welfare services is the general term used to describe a broad range of services designed to promote the well being of children and their families. The criteria and jurisdiction to permit the agency to intervene in a family's domain is defined by the Pennsylvania Child Protective Service Law and/or the Pennsylvania Juvenile Court Act.

Child welfare services include:

- Information and referral
- Screening and response assessment
- Assessment of general reports of neglect or status offenses
- Investigation of reports of child abuse reports
- In-Home support services
- Court ordered and Placement services
- Concurrent planning
- Permanency planning
- Independent Living services
- Adoption Services
- Public awareness, education, and training

POPULATION SERVED

Fulton County Services for Children provides assistance to children from the county who are from birth to 18 years of age who have been or are alleged to have been abused, neglected, exploited, are incorrigible and/or truant and the families of these children. Countywide services are provided without regard to race, religion, gender, disability, ancestry, or national origin. Placement services can be extended to youth who after age 18 years elect to continue in an educational or treatment program until they can achieve independence or become 21 years of age. Remaining in care after age 18 requires the Juvenile Court's approval and the youth's compliance with the placement plan. Every effort is made to help these young people successfully transition into adulthood.

There is no fee for services from FCSC. However, parents may be required to pay support to the county for children who are involved in court ordered services. Support matters are handled by the county's Domestic Relations Office.

JURISDICTION

The Pennsylvania Child Protective Service Law (CPSL) (Title 23 Pa. C.S.A. Chapter 63) and the Pennsylvania Juvenile Court Act (42Pa.C.S. Sec.6301 et seq) defines the

authority and parameters for intervention by FCSC. The Pennsylvania Department of Public Welfare promulgates regulations that provide direction to the agency to implement the laws into practice. In addition to regulations, the agency is obligated to implement practice recommendations made by the Department of Public Welfare, Office of Children, Youth and Families which are mandated by published Bulletins. In still another effort to effectively assert the authority of the agency, the Pennsylvania Child Welfare System has adopted *Pennsylvania Best Practice Standards for Child Welfare Services* which were modeled after the Child Welfare League of America practice standards. Fulton County Services for Children has embraced and made a commitment to incorporate these recommended practice guidelines at every level of service provision.

AGENCY STRUCTURE AND OPERATION

As the local public child welfare agency, Fulton County Services for Children is administered by the County Board of Commissioners. The Pennsylvania Department of Public Welfare's Office of Children, Youth and Families provides support and regulatory oversight to the agency. The State Civil Service Commission certifies all FCSC staff as eligible employees. The program is funded by local, state and federal tax revenue.

Fulton County Services for Children is led by a Director who has more than 35 years of experience in child welfare. In recent years, she was also appointed as the County Human Services Administrator. The Director is supported by two supervisors, six caseworkers, a fiscal officer and a receptionist. The agency benefits from the additional support of the County Solicitor, full time support of a paralegal funded through the SWAN LSI program and a part time child welfare consultant. (See organizational chart in appendices.)

FCSC divides the casework responsibilities between two units: Intake and Ongoing. Each unit is monitored by a supervisor and has three caseworkers assigned accordingly. Although divided into two units, the entire professional staff is trained and capable of providing the full range of child welfare services. Mutual support and assistance is necessary to assure that all responsibilities and mandates are met at all times.

All workers share information, referral and screening responsibilities by responding to incoming contacts to the agency. Whether by mail, by phone, or in person, when contact is made with the agency a worker is available to discuss questions, concerns and/or allegations. This worker gathers information and begins the assessment as to how the agency should respond. The availability of a trained child welfare worker to respond to contact with the agency is a 24 hour, seven day a week requirement. Daily in-office screening duty and after hour emergency duty coverage is rotated among the caseworker staff and supported by both supervisors and the director.

❖ Intake Unit Responsibilities:

All screening contacts are shared with the Intake Supervisor who reviews the information and makes a determination regarding the action to follow by the agency. Consideration of safety is first and foremost in making this determination. Jurisdiction and responsibility for intervention is determined by where the alleged event occurred or condition exists. If jurisdiction lies outside of Fulton County, a referral to the appropriate child welfare agency in the other jurisdiction will be made. FCSC addresses all allegations concerning situations which occur within the county and supports the efforts of the other county child welfare agencies to intervene on their behalf with children and/or families residing or located in Fulton County. Workers assigned to the Intake Unit investigate and assess both child abuse and general protective service referrals as defined by the CPSL and Juvenile Court Act.

The Intake Unit performs a number of functions and has a number of goals when providing services to the community some of which include:

- To reduce the risk of further abuse/neglect to the child and ensure the safety of the child,
- To enhance family functioning through the arrangement and provision of necessary services,
- To heighten the community's awareness of child abuse and neglect and its impact on families,
- To encourage more complete reporting and coordination of resources regarding the assessment, treatment and prevention of child abuse and neglect,
- To maintain and promote a positive working relationship between the agency, schools, medical staff, police and other professionals to meet the needs of the families and children within this community and,
- To continue to educate and train within the field of child welfare.

Following Commonwealth of Pennsylvania, Department of Public Welfare laws, regulations and guidelines and Fulton County procedures and policies, the Intake Unit assesses each child and the family using a comprehensive risk and safety assessment methodology and case management techniques. The main priority of the assessment/investigation is to determine whether the child(ren) will remain safe in his/her current environment. The caseworker will also evaluate the families' strengths and needs to determine if Fulton County Services for Children and/or another community agency should serve the family.

While the criteria for child abuse allegations and the investigation thereof are specifically and narrowly defined by the CPSL, the Juvenile Court Act offers a much broader scope of jurisdiction for general protective service assessment by the child welfare agencies. Any concerns regarding the safety and/or negative impact of a child's environment to the well-being of that child can be addressed by the agency. This includes but is not limited to the following:

- Inadequate supervision
- Inadequate housing
- Inadequate food, clothing, health care
- Inappropriate or excessive punishment
- Self referrals for assistance & support
- Incurable behaviors
- Runaways
- Truancy
- Requests from other child welfare jurisdictions for courtesy services

With each referral accepted for assessment, the Intake Caseworker has face to face contact with all of the children in the household, their caregivers and observes the home environment. Each allegation is addressed in addition to a general assessment of the following:

- family's living conditions
- the availability of family and community supports
- the nature of the parent/child interaction
- the effectiveness of parenting skills
- the threat of drug and alcohol or domestic violence issues in the household
- whether the children have developmental delays, educational needs and/or or behavior problems
- the parents' history and personal characteristics
- other indications of safety or risk threats

The broad goal of Children and Youth is two-fold: to protect children from birth to age 18, and to strengthen and sustain the family. The children who are opened to receive ongoing protective services may have been referred for any of the reasons previously discussed. The decision to provide ongoing in-home protective services depends on the assessment of the child's safety and well being, the level of potential risk, and the family's strengths and needs as determined by the broad intake assessment discussed above.

In 2010, there were a total of 295 referrals made to Fulton County Services for Children. Of these 295 referrals, there were 47 child abuse (CPS) investigations and 169 general protective service (GPS) assessments and 79 other requests which include referrals to law enforcement, contacts and assessments completed as a courtesy for another child welfare agency, calls for information only, and contacts that did not meet the child welfare criteria for intervention.

Of the 47 CPS investigations, 29 were physical abuse, 17 sexual abuse, 0 mental abuse, 1 imminent risk and 0 serious physical neglect. Of these cases, 0 cases were Founded, 7 Substantiated (and) 39 Unfounded.

Total number of referrals	CPS	GPS	Misc. not tracked by zip code
295	47	169	79

CPS Cases by allegation

Physical	Sexual	Mental	Imminent Risk	Serious Neglect
29	17	0	1	0

Disposition of CPS Cases

Founded	Substantiated	Unfounded	Pending
0	7	39	0

Of all of the cases referred to FCSC, 21 were accepted for ongoing protective services.

**FULTON COUNTY SERVICES FOR CHILDREN
2010 REFERRALS**

I = INDICATED

U= UNFOUNDED

Allegation		Big Cove Tannery	Burnt Cabins	Crystal Spring	Fort Littleton	Harrisonville	Hustontown	McConnellsburg	Mercersburg	Needmore	Warfordsburg	Waterfall	Wells Tannery
Physical Abuse	I	0	0	0	0	0	0	0	0	0	2	0	0
	U	1	0	3	0	2	4	9	0	2	5	0	1
Sexual Abuse	I	0	0	0	0	0	0	5	0	0	0	0	0
	U	0	0	1	0	1	1	6	0	2	1	0	0
Mental Abuse	I	0	0	0	0	0	0	0	0	0	0	0	0
	U	0	0	0	0	0	0	0	0	0	0	0	0
Imminent Risk	I	0	0	0	0	0	0	0	0	0	0	0	0
	U	0	0	0	0	0	0	1	0	0	0	0	0
Physical Neglect	I	0	0	0	0	0	0	0	0	0	0	0	0
	U	0	0	0	0	0	0	0	0	0	0	0	0
GPS Referrals		2	5	5	1	12	10	88	1	17	23	2	3

❖ Ongoing Unit Responsibilities

When it is determined at the intake level that a family needs or might benefit from ongoing protective services, a case file is prepared by the Intake Caseworker, approved by the Intake Supervisor and passed to the Ongoing Supervisor. The Ongoing Supervisor reviews the case file and determines which ongoing caseworker will be the best match to provide ongoing services. The Ongoing Caseworker is then introduced to the family. Together the Ongoing Supervisor and Caseworker assure the family's transition and follow through with ongoing services.

The primary goal of the Ongoing Unit is to safely maintain children in their natural home and to prevent the need for an out of home placement. The custodial parent or caregiver is responsible for the day-to-day care and supervision of their children, must keep them safe and minimize the threat of potential for harm whenever possible. The failure or inability of a child caregiver to protect and care for their children which results in harm or the potential for harm were it to continue and would have a detrimental effect on the child's health, development, or functioning compels the agency's intervention. If identified issues were not resolved during the intake assessment, the case is opened for ongoing protective services and in home services initiated. Once the case is opened for services, the Ongoing Caseworker continues to evaluate the immediate threat of harm to the child safety as well as the apparent risk to the child's future well being with every contact.

The Ongoing Caseworker meets regularly with the child and family to ensure the child's safety and that their needs are met, including adequate food, shelter, clothing, medical care, supervision and guidance. By cultivating a climate of trust and respect, the Ongoing Caseworker attempts to engage family members in the casework process and to understand the family dynamics, needs and strengths. In a collaborative effort, the caseworker, family members and other significant parties meet to develop a Family Service Plan (FSP) that builds on family strengths and addresses identified problems and needs. This plan becomes a roadmap for services and is discussed and reviewed at each future face-to-face contact. The FSP identifies service needs, defines goals and objectives, and sets priorities. The level of service and frequency of contact is determined by the identified strengths and needs of the family and the level of apparent risk to the child. The objectives and goals are measurable with concise, short-term actions and tasks to be completed by the identified party.

FCSC employs many strategies to provide effective intervention services. With the family's consent, our social service partners from the community are invited to join efforts to resolve family problems. The Ongoing Caseworker facilitates referrals, arranges transportation, serves as a liaison for the family and organizes intervention efforts. Additional services such as COPE, Family Group Decision Making, MH-MR, D&A, Early Intervention, Head Start and Early Head Start as well as Family Center Parenting Support Services etc. are often utilized to supplement child welfare casework services. In most cases, the services implemented are sufficient to resolve the issues which impact the safety and well being of the children and result in a successful case

closure. Juvenile Court action is initiated only when the parents/caregivers are unwilling or unable to meet the needs of the child and their safety and welfare is at jeopardy.

When the Ongoing Caseworker with the support of other community professionals is unable to effect positive change within a family, and the child's safety and welfare is deteriorating, a petition may be filed asking the Juvenile Court to consider placement of the child outside the home. The request for Court intervention is made only after all reasonable efforts to avoid a placement have been exhausted and the child's safety and well being continues to be at risk.

After the Court has made a determination that a child needs to enter placement, the Ongoing Caseworker must locate the most appropriate placement setting for the child and continue to provide and arrange for services to the child and family where separation has occurred. Every effort is made to place the child in the least restrictive, most homelike environment which will meet the child's specific needs. This includes maintaining the child in their current school setting whenever it is possible and in the child's best interest to do so. Relatives and other parties with significant connection to the child or family are considered as placement resources. This is known as Kinship Care. Fulton County Services for Children adheres to the standards set forth in the OCYF-issued Fostering Connections Bulletin which brings Pennsylvania into compliance with federal legislation regarding the placement of children.

FCSC is committed to locating kinship care resource families in order to explore their availability and appropriateness as a placement option. These efforts include but are not limited to the following:

- Family Interviews
- The use of a Family Tree which is developed with the caregivers, age appropriate children and other family supports
- Family Finding
- Accurint Searches
- Family Group Decision Making

There is a formal process prescribed by the Office of Children, Youth and Families which the agency must follow when contacting potential kinship care resource families to determine if they are viable placement resources. Kinship care resource families must meet the same criteria for approval as is required for foster care families. Even if an identified family resource is unable or unwilling to be a placement resource for the identified child, they may be able to support the child and/or family in some other way and may become an active participant in the treatment team.

In 2010, FCSC did 33 Accurint Searches resulting in 25 contacts in the interest of 10 children. This resulted in the development of Fostering Connections packets for 7 children to notify identified relatives of their opportunity to become kinship care providers. Of these contacts, 3 relatives expressed interest in becoming kinship caregivers and consideration of each of these was completed. One additional search

resulted in the location of a birth father. Through the efforts of the ongoing workers, this youth was able to go to reside with his father and a placement was prevented.

When managing placement cases, the agency is responsible for implementing the regulatory requirements of the Adoption and Safe Families Act (ASFA). The intent of the law is to focus upon the need for all children in placement to have a permanent plan established within a time-limited period. Under ASFA, there are only five (5) possible permanency goals that can be presented to the Court for review and decision at the Permanency Hearing. These permanency goals include the following:

1. Reunification
2. Adoption
3. Permanent Legal Custodianship
4. Permanent Placement with a Fit and Willing Relative
5. Another Permanent Court-Approved Living Arrangement, but *only* if there is a compelling reason why none of the other ASFA permanency goals is in the child's best interests

The Permanency Plan must consider the five (5) permanency goals, which are listed above, in order of preference. The agency is required to consider the most permanent to the least permanent goal and may only consider other goals, if the preceding goal is ruled out and a new goal is established by the Court. The Court reviews placement cases every three months to assure that all parties are aware of and on track with the goals and objectives developed in the Permanency Plan and to review the progress or lack thereof in each case. In addition to the details of the plan, the agency must update the Court regarding what reasonable efforts the agency made to finalize the plan and when permanency is expected to be achieved. The Court can approve or modify the plan.

As soon as a placement occurs, the Ongoing Caseworker works with the family and all of their potential supports to develop the Permanency Plan to achieve a permanent resolution to the child's need for placement. Every effort is made to assist the family to alleviate the conditions that necessitated their child's placement in order to safely return the child home. Reunification is the first priority placement goal in the child welfare system. However, to minimize a child's length of stay in placement without a permanent solution, the Ongoing Caseworker must also do concurrent planning. When reunification is not achievable, the alternate permanency plan or concurrent plan is implemented to ensure the child's safety and well-being while achieving stability and permanence.

If there is not a viable kinship care resource family, the Ongoing Caseworker utilizes contracted resources throughout the Commonwealth to locate the best placement setting to meet the child's needs. Again, the focus is to locate the least intrusive, most appropriate placement setting to meet the child's specific needs. Frequently used local resources for foster care include: Northwestern Human Services, Family Care Services, Inc. and the Children's Aid Society of Franklin County. FCSC purchases services from these agencies by contractual arrangement.

The foster care agencies are responsible for the recruitment, evaluation, training, and approval of foster homes. Following Department of Public Welfare laws, regulations and guidelines, as well as agency policies and procedures, the foster care agencies conduct comprehensive studies of foster home applicants to determine if they meet the standards necessary for approval. The foster care agency provides ongoing training and support to their foster parents. The ongoing needs of the foster parent for specialized training or support are assessed using a variety of techniques. General trainings are offered on a routine basis to better equip foster parents in their role. To meet the needs of all the children we serve, various levels of foster care are offered by the agencies. These include; respite foster care, regular foster care, specialized foster care, therapeutic foster care and foster to adopt care. Each level is unique and offers a different type of service. Foster care is intended to be temporary and is not considered a permanency goal but is a step toward achieving one of the goals in the permanency hierarchy.

Sometimes there are children who are not appropriate for foster care but require an out-of-home placement. More restrictive settings which provide closer supervision and specialized interventions are used. These specialized placement options offer different levels and specialties for care. Residential or group home placements generally address specific needs such as drug & alcohol treatment, behavioral health treatment, incorrigibility.

The following table reflects detail about the FCSC placements which either continued from 2009 or occurred during 2010:

CHILD	GENDER	AGE	TYPE OF PLACEMENT	PLACEMENT GOAL eff.12/31/10	STATUS EFF.12/31/10
1	male	13 yrs	foster care	reunification	CIP*
2	male	2 yrs	foster care	adoption	adopted
3	male	1 yr	foster care	adoption	adopted
4	female	10 yrs	foster care	adoption	TPR**/CIP
5	male	9 yrs	foster care	adoption	TPR/CIP
6	male	5 yrs	foster care	adoption	TPR/CIP
7	female	13 yrs	foster care	adoption	TPR/CIP
8	male	8 yrs	foster care	adoption	TPR/CIP
9	female	13 yrs	MH-RTF*	adoption	TPR/CIP
10	female	18 yrs	foster care	adoption	left care
11	female	8 yrs	foster care	adoption	adopted
12	male	12 yrs	foster care	adoption	adopted
13	female	10 yrs	foster care	adoption	adopted

*CIP= Continues In Placement **TPR= Termination of Parental Rights

It is significant to note that FCSC facilitated the finalized adoption of five children in 2010. There are an additional six children who are awaiting an adoption placement as

their parents’ rights were terminated in 2010. These children represent two sibling groups and one individual youth.

The table below reflects the agency’s use of Juvenile Court time and resources in 2010. The majority of hearings are held before the Honorable Carol Van Horn who is designated as the Administrative Judge for Fulton County Services for Children. She heard over 34 juvenile hearings; Judge Krom and Judge Walsh heard 3 hearings for a total of 40 Juvenile Court hearings in 2010.

It is significant to note that only one new FCSC placement occurred during 2010 and that this was the placement of a youth who was transferred from Juvenile Probation due to dependency issues.

2010 Calendar Year Court Hearings

Hearing Type	Judge Van Horn	Judge Krom	Judge Walsh
Detention Hearing	0	0	0
Adjudication without Disposition	0	0	0
Detention/Adjudication Hearing	0	0	0
Detention/Adjudication/Disposition Hearing	0	0	0
Permanency Review Hearing	28	3	3
Interim Hearing	0	0	0
Interim/Disposition Hearing	0	0	0
Disposition Hearing	0	0	0
Adjudication/Disposition Hearing	1	0	0
Other Hearing	0	0	0
Involuntary Termination	3	0	0
Adoption Finalization	2	0	3
TOTAL	34	3	3

❖ Fiscal Support

The ability of FCSC to provide child welfare casework services is dependent on the funding the agency receives from the state and the county. State funding is not only contingent on the availability of state funds but also on the state's success in securing federal funding. No one resource can support the expenditures of the agency without the assistance of the other funding resources. The procurement and sustaining of funding is tied to accurate compliance with local, state and federal laws and standards. Although compliance is an agency wide shared responsibility, documentation and reporting of expenditures is largely the responsibility of the FCSC Fiscal Officer. Fiscal records are routinely reviewed by OCYF and by state and federal auditors for completion and accuracy. FCSC is proud to report that we have achieved 100% compliance ratings during the calendar year 2010.

Actual costs incurred in carrying out the program are proposed in the Implementation Plan and Needs Based Budget. Costs encompass the total county effort of providing services to children, youth and families includes the activities of Fulton County Services for Children, specific activities of the Fulton County Juvenile Probation Department, the Juvenile Court, and any other related contracted providers of service to dependent and delinquent children. The Fiscal Officer works with the Director to develop the Implementation Plan and Needs Based Budget each fiscal year.

Administration of County Children and Youth Social Service Programs provisions and procedures are contained in regulations found in Title 55 of Pennsylvania Code, Chapter 3130. Allowable Costs and Procedures provisions and procedures are contained in regulations found in Title 55, Chapter 3170. Planning and Financial Reimbursement Requirements provisions and procedures are contained in regulations found in Title 55, Chapter 3140.

*Please see appendices for an analysis of expenditures and revenues for FY 2009-10.

COLLABORATION WITH OUR PROFESSIONAL COLLEAGUES

It is essential that the child welfare system interface closely with social, educational, health, legal and other community systems in order to effectively address the needs of the families we serve. All professionals who encounter children in their work are required by law to report suspicions of child abuse to the child welfare agency. FCSC is compelled to respond to these reports. In order for this mandate to work efficiently and effectively to protect children and enhance families, professionals in our community must be trained to be aware of and to respond appropriately to indicators and/or disclosures of child abuse. There must be a climate of support, communication and collaboration. In Fulton County, we have the advantage of the close proximity and familiarity of a small county. The agency is well known and active in most community activities and initiatives. We welcome the partners who join in our mission to protect

children and value the expertise and services they bring to this cause. FCSC caseworkers and supervisors are encouraged to be active participants in as many local professional meetings, planning teams, community initiatives as possible. This affords the opportunity for FCSC to be widely represented and for each worker to share in the exchange and forwarding of information. Building bridges with our professional colleagues is always time well spent and serves to enhance our own service delivery. Currently FCSC caseworkers and supervisors participate in the following regular activities in our community:

- The Fulton County Partnership
- Communities That Care
- The Fulton County Children's Forum
- The Franklin, Fulton, Huntingdon Adoption Coalition
- The Franklin-Fulton Children's Roundtable
- Student Assistant Program
- Early Head Start & Head Start
- Local Interagency Coordinating Council - LICC
- Safe Kids Program
- Child First Program
- Camp Cadet
- Fulton County Child Death Review Team
- Franklin/Fulton Counties Child Death Review Team

The following is a discussion of our connections to other vital resources in our county that work closely with FCSC to fulfill our mission of protecting children and enhancing families:

County Solicitor, Guardians ad Litem, SWAN paralegal

The Fulton County Solicitor is involved in all aspects of litigation, which arise under the Juvenile Act, the Child Protective Services Law, the Adoption and Safe Families Act, and parental termination proceedings under the Adoption Act. Additionally, the solicitor represents the agency in administrative proceedings arising under these laws and applicable state and federal regulations, as well as appeals to the Superior and Supreme Courts. It is the Solicitor who advises, represents and protects the agency in legal matters and presents on behalf of the agency in Juvenile Court. The Solicitor also sits with the agency on the local Child Death Review Team and is available as needed to confer regarding specific FCSC cases.

A Guardian ad Litem (GAL) is appointed for every child whose case appears before the Juvenile Court. It is the role of the GAL to represent and advocate for the child's best interest. In Fulton County we welcome the support of two GALs, a primary and her secondary. Both are experienced attorneys devoted to the welfare of children and well versed in child welfare law and practice. In 2011, GALs across the state will participate in child welfare specific training sponsored by the Department of Welfare, Office of Children, Youth and Families. The first training for both guardians ad litem and parent

attorneys will occur in March and the county's Juvenile Court Judge has chosen both of Fulton County's GALS to attend.

Through the Statewide Adoption and Permanency Network (SWAN), FCSC benefits from the full time support of a paralegal. This position is funded by SWAN through the Legal Services Initiative. The paralegal has assumed many responsibilities that once fell upon caseworkers and added to their already heavy load of paperwork. These include but are not limited to: preparation of all court documents, coordinating the scheduling of juvenile hearings, CPCMS primary reporter, diligent searches, and support during agency meetings.

Fulton County Juvenile Probation

Frequently, child welfare and juvenile probation share responsibility and jurisdiction over a common population of youth, those who are ages 13-18 years and have come within the purview of the Juvenile Court's jurisdiction. Currently in Fulton County, Juvenile Probation Officers (JPO) are equipped to use a general screening tool with all youth to determine if there are child welfare issues/needs that impact their delinquent behavior and the inappropriate choices they have made which brought them to the attention of the Probation Department. If there is indication of such, the JPO will make contact with FCSC and together the agencies will accept Shared Case Responsibility (SCR). In 2010 the formal process of SCR was mandated to be implemented by counties through a Bulletin issued by OCYF with the endorsement of the Juvenile Court Judges' Commission. By sharing information, resources and expertise, it is hoped that intervention with youth and their families will be more effective, more sustainable and more cost efficient. Unlike in many counties, implementing the SCR Bulletin in Fulton County was very easy and not at all painful. Line workers in both agencies have enjoyed a long standing collaborative relationship and readily communicate when cases overlap. Formalizing this practice has only enhanced the efforts of both agencies. Both agencies have committed to this process and to the teamwork it requires to be successful.

As of 12/31/10, there were two cases identified as Shared Case Responsibility Cases.

Fulton County Center for Families

The Fulton County Center for Families (FCCF) provides an array of services in the community which support and compliment the efforts of FCSC. Among those most closely aligned with FCSC are included:

- ***The COPE (Community Outreach Prevention Education) program*** is focused on increasing the awareness of abuse risk factors and prevention methods for parents and the community. The COPE program provides an outreach program to parents via two research based curriculums (Parents as Teachers [PAT] and Promoting Alternative Thinking Strategies [PATHS]) and with other educational materials provided by the Pennsylvania Family Support Alliance which focus on child development information, parenting guidance and support and skill building. .COPE workers make regular home visits, facilitate group

meetings and team with FCSC caseworkers. Efforts to increase community awareness of the dangers of substance abuse are made by FCCF by sponsoring the Fulton County Reality Tour.

COPE partners with FCSC by supplementing our in home services. The additional contacts and support provided by the COPE worker strengthens the safety net built by the FCSC caseworker. The coordinated effort of both agencies often expedites the resolution of problems and avoids the need for out of home placement. COPE workers also partner with FCSC staff to do Mandated Reporter training with other local professionals. The curriculum developed by the Pennsylvania Family Support Alliance is used as the basic format for this training.

- ***The Time Limited Family Reunification Program (TLFR)*** provides focused services for families with children in placement. Intensive and targeted services are provided by the TLFR worker to assist caregivers in fulfilling the objectives of the permanency plan in order to achieve timely reunification. The TLFR worker assists with coordinating and supervising family visits when needed. The TLFR worker does supervised visitation for identified TLFR client families as well as providing intensive in home services to address parenting deficiencies in an effort to reduce the amount of time needed to achieve reunification of children with their family.
- ***The TIP (Truancy Intervention Program)*** is one element of the county's new Truancy Prevention Initiative. Introduced in September 2010, this program is designed to divert youth who have demonstrated early signs of chronic truancy. The school district must document illegal absences, develop a Truancy Elimination Plan with the student and their caregiver and exhaust their resources to resolve the attendance problem. If unsuccessful, they will file a citation with the Magisterial District Judge (MDJ) with all the supporting documentation. The MDJ may refer the case to FCSC at which time the Intake Supervisor will review all information. If there are no prevailing child welfare issues or allegations, the case will be diverted to the TIP program. The TIP worker will attempt to intervene to resolve the attendance problem. If, however, child welfare concerns are identified, FCSC will resume responsibility for the case.
- ***The Fatherhood Initiative's*** vision and long-term impact is that Fulton County families will have fathers who are involved, responsible and committed to providing the best possible environment for their children to learn and grow. The program serves families living in Fulton County and specifically fathers, both custodial and non-custodial, beginning prenatal through adulthood.

Fathers are served in both the home and community settings. The goal is to increase community awareness of the important role that fathers have in child success by using strategies that support that concept. Strategies include parent education and the encouragement of positive male role models for families. Some examples of services include: parent education focused on curriculums including "24/7 DAD, Dr. Dad and Directions for Dads. Paid Fatherhood Initiative

staff supported by community volunteers and partners conduct group meetings, workshops and monthly father/family events. A specific referral for this service is not required for this initiative; however, the service is overlaid to all families referred to the Center for Families by Fulton County Services for Children.

PROGRAM	# of FAMILIES	# of CHILDREN	CASE STATUS (as of 12/31/10)
COPE	17	35	4 families still open
TLFR	2	5	Parental Rights Terminated
TIP	1	1	Closed

❖ Fulton County Truancy Prevention Initiative

In the spring of 2010, FCSC invited school officials from each of our three school districts, the three local Magisterial District Judges, Juvenile Probation, and the CASSP coordinator to join in developing a protocol to improve our efforts to intervene with students with very poor attendance and/or truant behaviors. This initiative was supported by Juvenile Court Judge Carol Van Horn in tandem with the efforts of the state’s Children’s Roundtable Initiative. By enhancing the process and communication with other local professionals who are compelled to address truancy issues, FCSC hopes to impact the number of truant students and the residual effects of that behavior.

This group was able to agree on a written protocol for intervention in truancy cases. Single Points of Contact for the agency and each school district were identified; forms were developed; and a formal procedure was defined. We have agreed to revisit the protocol as needed to assure that we are effective in improving our services to address this issue. We are also hopeful that as communication improves other issues will be easily addressed and resolved as they arise. One current example is the frustration school officials share regarding students who are habitually absent but provide medical excuses. These absences are not then illegal absences and fall outside the scope of this protocol. Although FCSC has no jurisdiction in which to intervene in these matters, as a support to the districts, the agency sent letters to local health care providers to make them aware of the truancy initiative and to encourage their close scrutiny of frequent student absences.

As of 12/31/10, there was only one truancy referral made to FCSC. Although the number of referrals is lower than expected, there has been increased communication and a continued commitment to the initiative. A copy of the protocol is included in the Appendices.

❖ **Family Group Decision Making**

Family Group Decision Making is an evidence-based best practice intervention which focuses on empowering families to identify their own strengths and needs and to determine for them the direction of resolution. Through FGDM, families can avoid further immersion into the child welfare system, assure the safety and well being of their children within their own family system, avoid out of home placement, and/or facilitate faster reunification if placement has already occurred. FGDM is one of several initiatives recognized and promoted by the Pennsylvania Children's Roundtable Initiative.

There are currently two providers who partner with FCSC to bring Family Group Decision Making services to our families. Since FCSC first implemented FGDM in 2005, the agency has a long standing contract with Professional Family Care Services for Children and Youth located in Johnstown, PA. In 2010, another contract was developed with a local team to do FGDM. This was one of the positive outcomes resulting from a promotion and training event sponsored through a joint effort of Fulton County Services for Children and Franklin County Children and Youth Service to educate our staffs and local social service providers regarding the FGDM process. The new FGDM provider team opted to participate in this certification training in order to offer a local resource for this service.

In 2010, FCSC made referrals for FGDM in the interest of 17 families involving 35 children. FCSC caseworkers are encouraged to consider FGDM referrals for families at every level of service. Early intervention with FGDM can help to avoid long term ongoing services and out of home placements.

❖ **Franklin- Fulton Children's Roundtable Initiative**

The Pennsylvania Permanency Practice Initiative (PPI) was commissioned by the State Judge's Roundtable in 2007.

The underlining theory on which the PPI was built is that enhanced judicial oversight combined with strength-based, family-led practice will ultimately increase the number of children safely maintained in their own homes and support expedited permanency either through safe reunification or the finalization of another permanent plan.

As of October 1, 2010, thirty-one (31) Pennsylvania counties are participating in the PPI. The thirty-one (31) PPI counties are comprised of three Phases, Phase One, Phase Two and Phase Three depending on when the individual counties entered the initiative. Fulton County is a Phase Two county.

The Honorable Judge Carol Van Horn has led the local Children's Roundtable efforts since December 2006, and there has been cooperation among the Courts, C&Y, JPO, Human Services Administration and the Commissioners. All have supported it and have worked well together to make it a success. The Roundtable has and continues to evolve. Mental health, behavioral health managed care and school representation

were invited to join the local Children's Roundtable discussions during 2010 to assist in bringing key players into the initiative in a way that will benefit the children we often jointly serve.

Some of the PPI initiatives currently in practice in Fulton County include:

- **Family Group Decision-Making** – As previously mentioned, FCSC began using FGDM in late 2005. At that time, all staff was trained in Fulton County for four days by Oregon trainer, Jim Nice. The first FGDM conference was held in May of 2006. FCSC is currently under contract with Professional Family Care Services for Children and Youth in Johnstown and with a local team who provides the service to facilitate our meetings. Franklin-Fulton counties co-sponsored a 4-day Family Group Decision Making training on August 17-20, 2010 . The training was presented by the University of Pittsburgh Child Welfare Training Program and 35 registered for the course.

- **Family Finding** –A county team attended two full-day trainings in August and follow up trainings in September, October, November and December, 2009. Family Finding is combined with other casework efforts to identify and locate extended family members and significant others in an effort to expand the individual support system for each family.

- **Family Development Credentialing (FDC)** – The agency director and casework supervisor had the opportunity to attend the advisory committee meetings held to implement Family Development Credentialing in Fulton and Franklin counties. FDC training is now co-sponsored by Franklin and Fulton Counties C&Y and is scheduled to be offered several times in each upcoming year. The first FDC class completed the course and graduated in September,2010. A second course began in January, 2011. The course consists of approximately 80 hours of classroom time spread over six (6) months. The goal of FDC is to impart the philosophies, language and practices unique to child welfare to our colleagues who work with the same population to assure that services are provided in the most effective and efficient way and fully meet the needs of our families.

- **Statewide Adoption Network (SWAN) Legal Services Initiative (LSI)** – Fulton County, beginning August, 2009 had a part-time paralegal paid for 100% by Diakon/Swan/FDR. The agency, beginning July 19, 2010 now has a full-time paralegal for the 2010-2011 budget year. The time, services and expertise provided by the SWAN paralegal has not only improved the flow of services within the agency but has also saved the caseworker and supervisory staff a significant amount of time which can then be devoted to direct services with families.

- **Diakon-SWAN Diligent Search Initiative** – these searches are performed by our agency’s SWAN paralegal and supplement Family Finding efforts. In 2010, FCSC conducted 33 searches which resulted in 25 contacts in the interest of 10 children.

- **Three-month Permanency Review Hearings** are now being held. The Court has scheduled the addition of an extra 2 days/month in Fulton County devoted to juvenile matters. The goal of 3-month reviews is to encourage everyone involved in placement cases to make every effort to move cases forward in the timeliest way possible. Close and more frequent oversight by the Court imposes more accountability on all parties. The 3-month review process has proven to be effective in reunification cases. In the past, parents often hurried to complete ordered services immediately prior to hearings; the more frequent hearings provide additional incentives to complete services immediately rather than delay for several months.

- **CPCMS (Common Pleas Case Management System)** – In 2009, the agency began using the CPCMS court-reporting system which had recently been adapted to address Juvenile Court matters. Initially staff was given an overview orientation of CPCMS and assisted with the transfer of case information into CPCMS. In 2010, two supervisors and the paralegal attended three days of additional training for CPCMS yet still find the system difficult to navigate. It is hoped that as difficulties are resolved at the state level and CPCMS becomes more familiar and comfortable for users, it will collect data useful at many levels for planning and providing court related services.

- **TLFR** - In addition to the above and as previously mentioned, Fulton County Services for Children has another permanency initiative that is not generally included in the Court Permanency best-practice initiatives, but nonetheless has been very successful. The agency has a 3-year Time-Limited Family Reunification (TLFR) grant of approximately \$93,000/year. This money is used to contract with the Center for Families for the COPE (Community Outreach Prevention Education) program. They work with every FCSC family who has children in placement with the goal of reunification. Services are as intense as is needed to bring about reunification and includes but is not limited to: assisting with scheduling appointments (counseling, MH, D&A issues), engaging the cooperation and enhancing the understanding by parents, improving parenting skills and assisting with transportation needs . The TLFR workers are in frequent contact with the agency’s ongoing caseworker and ultimately the Court to document progress made toward reunification and to define what progress needs to still be made. TLFR funds have also been helpful in assisting with the costs of bonding assessments and other psychological assessments needed to determine when children are ready to return home.

- **Grief and Loss Training** – In November 2010, all agency staff attended a two-day grief and loss training held locally and sponsored by Fulton County

Services for Children. The Grief and Loss Model is a practice approach to work with those who have experienced profound losses in their lives such as children in foster care and those who are in the adoption process. It assists those individuals in the building of relationships through the attachment process.

Staff Training

All Children and Youth workers and supervisors benefit from the Competency-Based Training Program which is sponsored and provided through the collaborative efforts of the PA Department of Public Welfare and the University of Pittsburgh. Each competency-based course is developed to focus topic information specifically as it relates to child welfare practice as defined by the PA Best Practice Standards for Child Welfare. All new Children and Youth Service caseworkers must participate in the "Charting the Course" curriculum which comprises 120 training hours in order to become certified as direct service child welfare workers. All workers hired in 2010 were enrolled in the certification curriculum. While in "Charting the Course", workers participate with the same training cohort group which builds cohesiveness and a stronger opportunity for the transfer of learning to be most effective. The introductory curriculum sessions are focused to ingrain the concepts of the PA Best Practice Standards in Child Welfare in all aspects of future child welfare practice.

After certification, all caseworkers and supervisors must accrue a minimum of 20 training hours each year. Training for ongoing caseworkers and supervisors is available via the Competency-Based Training Program. Staff also participates in local, in-house and county training opportunities. Caseworkers and supervisors meet regularly to staff cases in order to ensure that quality work is being completed, that safety is assured, that the Family Service Plan is regularly reviewed and revised as needed to reflect that pertinent services are being provided to address the families' needs. Training and skill building is an ongoing and never-ending process which occurs in many different ways.

In 2010, FCSC caseworkers and supervisors invested in a total of 789 hours in training.

Professional Development

Each year in recognition of Child Abuse Prevention Month in April, the agency sponsors a conference with topics presented that are pertinent for those who work with children/youth in any capacity. There are generally 100+ in attendance at these events. In 2010, the agency partnered with Fulton County Center for Families to hold a breakfast to celebrate the Week of the Young Child, the second week of April. The breakfast, entitled "*The Week of the Young Child: A Celebration, A Remembrance*" was held to raise awareness of Shaken Baby Syndrome (SBS). Fulton County had the tragic experience of a child death in 2009 due to SBS. In addition, another child death due to SBS occurred in neighboring Hancock, Md. in early 2010. Addressing this topic in a broad venue was one of several outcomes of the Child Death Review Team Report prepared in the aftermath of these tragedies.

Past conferences have included:

- 2009 - "*Broken Families, Broken Dreams: High, Drunk & Parenting*
- 2008 - "*Protecting Children 2008*"

- 2002 - *“Children First”*
- 2000 - *“No Escape” (Kids and Substance Abuse)*

- 1998 - *“When Home Isn’t Safe”*
- 1997 - *“The Impact of Change”*
- 1996 - *“Keeping Promises to our Children”*
- 1994 - *“Times of Change, New Solutions”*
- 1993 - *“Forming New Partnerships, Exploring New Options”*

This is the first annual report prepared and submitted by the Fulton County Services for Children. This process will be adopted as a yearly practice to be modified and enhanced as needed. Your input regarding content and other information of interest is appreciated. If you have feedback or suggestions, please contact Jean E. Snyder, Director at 717-485-3553 or at jsnyder@co.fulton.pa.us.

APPENDICES

Including:

Fiscal Analysis

- Expenditures
- Revenues
- County Share
- IL Grant
- TLFR Grant
- Technology Grant
- FGDM Grant

FGDM Calendar Year 2010 Report

Truancy Intervention Program (TIP) Protocol

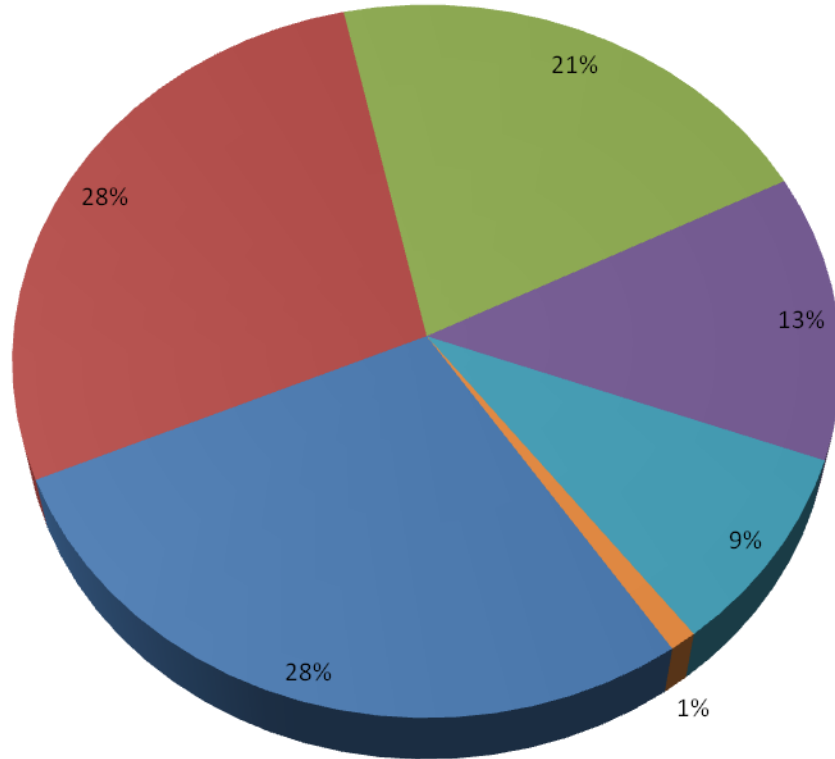
Organization Charts

- Services for Children
- Human Services Administration

Human Services Administration 2010 Report

Fulton County Services for Children Analysis of County Share of Expenses July 1, 2009-June 30, 2010

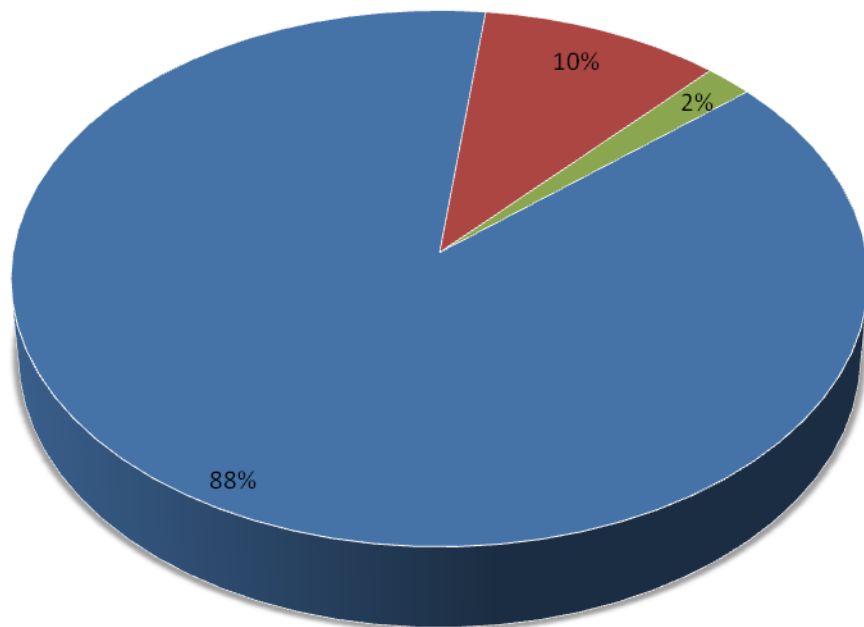
- In-Home Services
- Non-Reimb. Indirect Costs
- Community-Based Placements
- Residential Placements
- Administration
- Juv. Act Proceedings



Total County Share: \$300,335
(of Total Budget: \$1,364,981)

**Fulton County Services for Children
Independent Living Grant
FY 2009/10
July 1, 2009-June 30, 2010**

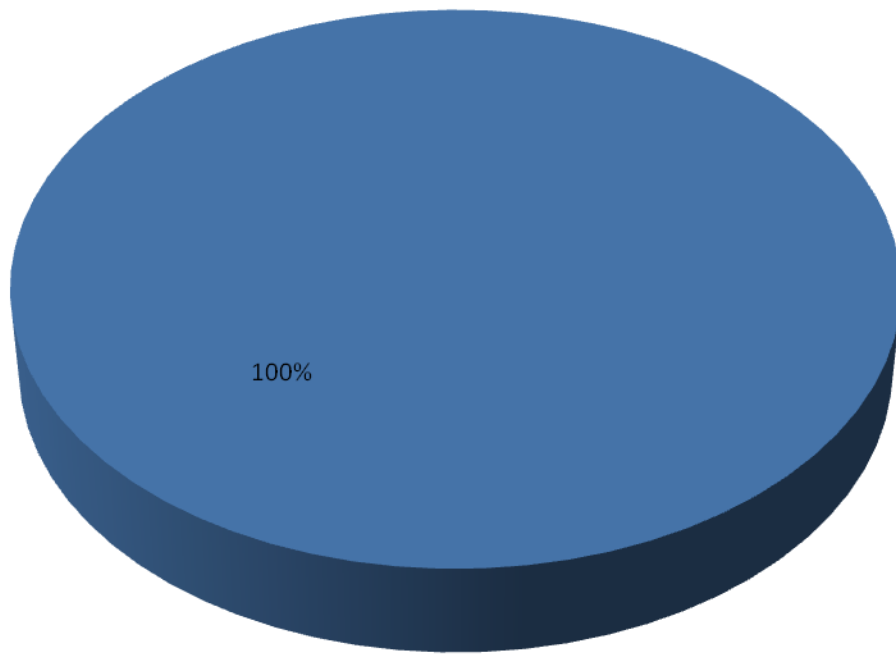
- Federal Funds
- State Funds
- County Funds



Total Amount: \$4,863.16
Federal Share: 4,277.14
State Share: 487.92
County Share: 98.10

**Fulton County Services for Children
Time-Limited Family Reunification Grant
FY 2009/10
July 1, 2009-June 30, 2010**

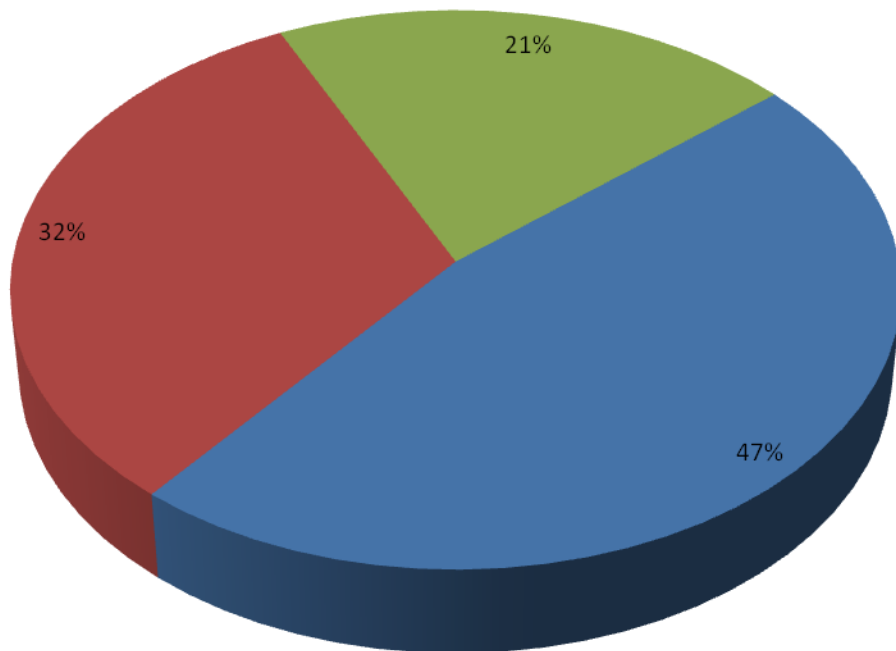
■ State Funds



Total Amount: \$92,127.56
State Share: 92,127.56
County Share: 0

**Fulton County Services for Children
Information Technology Grant
FY 2009/10
July 1, 2009-June 30, 2010**

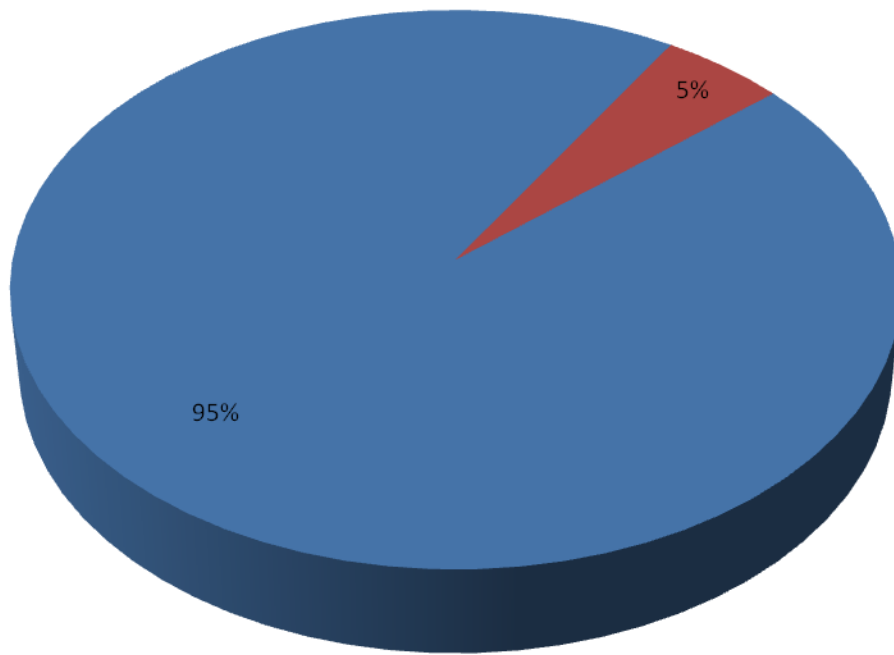
- State Funds
- County Funds
- Federal Funds



Total Amount: \$6,420.00
Federal Share: 1,364.30
State Share: 3,033.43
County Share: 2,022.27

**Fulton County Services for Children
Evidence-Based Grant
(Family Group Decision Making)
FY 2009/10
July 1, 2009-June 30, 2010**

■ State Funds
■ County Funds



Total Amount: \$12,200
State Share: 11,590
County Share: 610

Fulton County Truancy Intervention Program Protocol

Effective September 1, 2010

Each school district will follow Section IV of the Department of Education Basic Education Circular (BEC) issued to address truancy. Each district has a designated staff who will track student attendance and send the recommended notices to parents if unexcused absences occur. Every effort will be made by the child's home school team to identify and address issues that may contribute to the student's attendance problem by developing a Truancy Elimination Plan (TEP).

If, despite these efforts, unexcused absences persist, a citation will be filed with the Magisterial District Judge (MDJ). These filings will be timely as per the BEC guidelines. The school districts will submit their TEP and the Fulton County Services for Children (FCSC) Referral for Truancy Intervention form (copy attached) with the documentation for the citation. When making a judgment on the citation, the DMJ will have the prerogative to order the student and the parents to cooperate in a course of intervention decided by FCSC in lieu of payment of a fine. It is suggested that maximum fines be the alternative in order to encourage participation with FCSC rather than simply paying the fine.

The FCSC Intake Supervisor, Christine McQuade, will review every referral received to determine the most appropriate course of intervention. If there are no allegations of abuse or neglect and if the case is not an open case with FCSC, the new referral will be diverted to the Truancy Intervention Program (TIP) offered by the Center for Families. The Center for Families TIP coordinator, Deb Hiller, will employ an evidence-based approach to truancy intervention. This program will be time limited and adjusted to meet the needs of each student and their families. Collaboration will continue with the referring school district, and with FCSC until the attendance problem is resolved. FCSC will provide feedback to the DMJ.

We are hopeful that this team effort will prove to be effective and helpful to everyone but especially to the students who are struggling to succeed or simply marking time before dropping out and/or moving on to other less desirable adventures. Together we can make a difference.

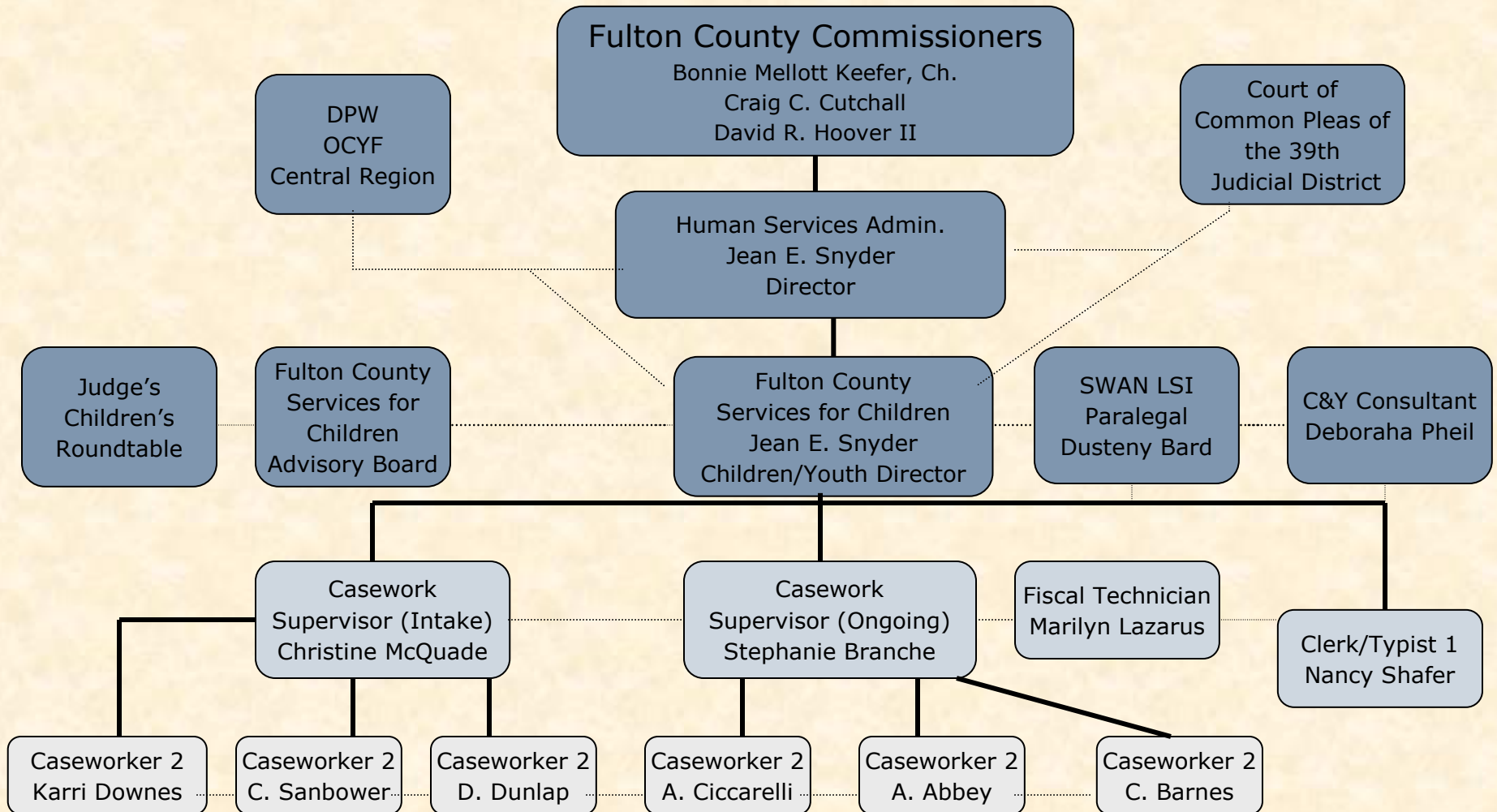
FGDM REFERRALS AND CONFERENCES
Fulton County Referrals for Calander Year 2010-2010

	Jan	Feb	March	April	May	June	July	Aug	Sept	Oct	Nov	Dec	YTD
# Referrals	0	1	2	3	2	0	1	2	1	1	0	0	13
# Total Conferences	0	0	0	1	1	4	0	1	1	0	1	0	9
# Traditional Conferences	0	0	0	1	1	3	0	1	1	0	0	0	7
# Transitional Conference	0	0	0	0	0	1	0	0	0	0	1	0	2
# Children Served by Conf.	0	0	0	2	4	7	0	1	2	0	1	0	17
# Children - Out of Home Care	0	0	0	1	0	6	0	1	2	0	1	0	11

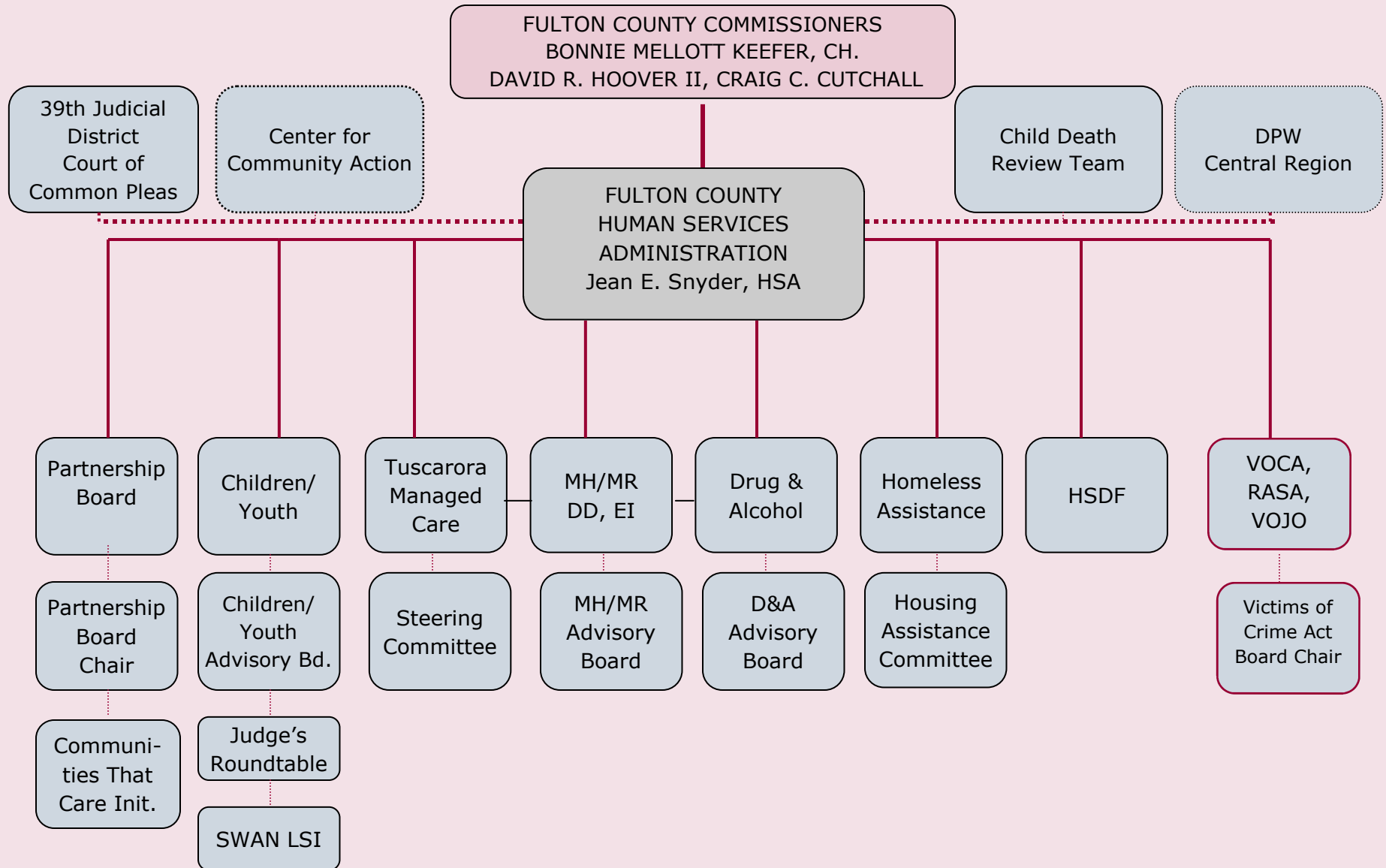
(T) denotes Transitional Conferences

Conference #	# Children	Comments
29-2010-01	2	one child at home, one at in patient D&A treatment. Conf date: 4-20-10
29-2010-03	4	all children at home. Conference date: 5-15-10
29-2010-07 (T)	1	one youth in placement. Conference date: 6-2-10
29-2010-05	3	3 children in foster care. Conference date: 6-5-10
29-2010-02	2	2 children in placement Conference date: 6-16-10
29-2010-06	1	1 child at home. Conference date: 6-30-10
29-2010-04	1	1 child in placement. Conference date: 8-3-10
29-2010-10	2	2 children in kinship placement. Conference date: 9-19-10
29-2010-13	1	1 child in placement. Conference date: 11-22-10
Withdrawn Conferences	# Children	Comments
29-2010--08	1	One child at home. Mom did not want to participate in FGDM Withdrawn: 5-10
29-2010-09	1	1 child in group home placement. Interested family withdrew. Withdrawn: 11-12
29-2010-11	1	1 child at home. No heathly supports identified. Withdrawn: 11-18 29
29-2010-12	5	5 children at home. Family not cooperative. Withdrawn: 11-18

FULTON COUNTY SERVICES FOR CHILDREN



FULTON COUNTY HUMAN SERVICES ADMINISTRATION Organizational Chart



FULTON COUNTY
HUMAN SERVICES ADMINISTRATION

2010 ANNUAL REPORT

Fulton County's Services for Children Director also serves as the county's Human Services Administrator and, as such, has oversight in Fulton County over the following programs in addition to the Children & Youth program:

- Franklin/Fulton Mental Health/Mental Retardation Program – (MH/MR)
- Franklin/Fulton Drug & Alcohol Program – (D&A)
- Tuscarora Managed Care Alliance – (TMCA)
- Human Services Development Fund - (HSDF)
- Homeless Assistance Program - (HAP)

Below are highlights of the accomplishments Fulton County in the above programs in 2010.

FRANKLIN/FULTON MENTAL HEALTH/MENTAL RETARDATION PROGRAM

- The CASSP coordinator continues to hold bimonthly Children's Forums in Fulton County in conjunction with Fulton County Partnership meetings. The Fulton County Partnership is a 501(c) 3 organization that provides the "glue" for Fulton County human services. The Partnership also offers a variety of services including Medical Assistance Transportation (MATP), a children's dental clinic for ACCESS cardholders, employment transportation assistance program (ETAP), influenza vaccine clinics and information and referral. The Children's Forum brings together those in the children and youth service system to discuss ways to enhance services and the coordination of services to families in the county.
- An outgrowth of the Children's Forum in 2010 has been the collaboration between Tri-State Community Health Center (the county's federally qualified rural health center) and the schools for better coordination of IEPs, medication administration and student absences. This coordination will now be expanded to include all county physicians' offices.
- There are active Student Assistance Programs (SAP) in all three county school districts in the middle and high schools and some districts make the SAP teams available as needed in the elementary schools.
- Laurel Life (a program offered by Manito, Inc.) now provides MH services in at least one school district and is exploring the possibility of making drug and alcohol treatment available also.
- Nulton Diagnostic and Treatment Center is now offering an alternative education program in Bedford, PA to some Fulton County school districts.
- A new MH outpatient clinic is set to open in January 2011. Adams/Hanover Counseling Service will open a licensed outpatient clinic on Lincoln Way West in

McConnellsburg. The new clinic will offer outpatient therapy and med-checks. In addition to therapists, the clinic also employs a psychiatrist.

- The Integrated Children's Service Plan (ICSP) was written by the MH/MR CASSP coordinator. Fulton County was awarded a \$64,100 Promising Practices Grant in 2010 to promote school success by working with the families of youngsters in day care who have unusually challenging behavior problems and an identified group of secondary school aged youth who appear to be at risk of academic failure or early withdrawal from school. For those in their early education years, the focus will be on building habits which will contribute to the child's future educational success, with special attention to the parents of youngsters whose behaviors are difficult to manage in the day care setting. The program coordinator will work with parents and the professional day care staff as well as community child care providers, teachers and staff in early childhood education programs to develop skills to modify inappropriate behaviors. There will be opportunities for training to build adults' skills and also a point person for parents and professional staff to contact with specific questions, training needs and for consultation. A website will be created for parents to submit questions regarding child care, to provide parents with the opportunity to participate in parent training programs via the internet and to locate links to other resources. The ICSP Grant also includes working with high school aged youth who are seemingly disengaged in their educational opportunities. While support, services and assistance will be offered to the high school student group to promote their educational and life success, these students may also serve as an advisory group for the grant committee. They will have the opportunity to help review resource materials and training curriculum for teen students and young parents. Hopefully these older students will be of help in identifying early intervention strategies and venues that would have been of help to them in their educational careers.
 - Franklin County Office of Aging obtained a grant for a Cross Systems project for Aging and MR. Since MH/MR is a joinder program, Fulton and Bedford counties were invited to participate in the launch lunch sponsored in May to share information regarding the grant and our local efforts to address this national issue. The topic was "Aging and Developmental Disabilities" presented by Dr DeWulf. Also a representative from the Fulton County Office of Aging has been participating in the quarterly meetings during which specific cases and the general needs of the two populations from both counties are reviewed.
 - In September 2010, DCORT (Disaster Crisis Outreach and Referral Team) & CISM (Critical Incident Stress Management) team members were deployed to Southern Fulton High School and to the fire station to offer assistance for a vehicle accident that claimed the lives of 2 young students.
 - In November 2010, a CISM team provided a defusing for the Hustontown Fire Company due to a vehicle accident that resulted in the death of a young resident.
-

FRANKLIN/FULTON DRUG & ALCOHOL PROGRAM

- Prevention Services – in Fulton County, Franklin/Fulton Drug & Alcohol contracts with the Fulton County Center for Families to do many of the prevention activities. One such activity is the establishment of the Reality Tour held quarterly in Fulton County. The Reality Tour is an innovative drug prevention program for parents and children. Also planning began in 2010 for the February 2011 Save-A-Life Tour event which will be co-sponsor by the Center for Families and Fulton County Partnership. The multi-million dollar drinking and driving simulators give participants a completely realistic, sober perspective on the effects of driving while intoxicated. The event features massive tour posters on display, high intensity videos rolling on huge monitors, and the charismatic show presenters engage both participants and onlookers alike.
 - On June 14th & 15th, the two-county D&A Coalition held a conference and over 130 attended from Franklin and Fulton County.
 - In October 22nd- 29th, Red Ribbon Week was held and advocates delivered a Prevention/Drug-free message to over 10,000 elementary school students in both counties; coordinating and accomplishing this event took over 20 volunteers logging more than a total of 100 hours.
 - On October 20th-21st, Human Service Training Days were held and featured 2 sessions: 1- review of survey data from Prevention Plan and PA Youth Survey, 2- Panel discussion on the D&A trends in both counties (Panel members included Franklin County DA's office, Chambersburg Police Department, Fulton County Juvenile Probation Office, Fulton County Sheriff, D&A Prevention, NTP Consultants (private treatment provider). Both sessions were very successful and received positive feedback.
 - D&A played an integral role in the Fulton County Communities that Care, development, training, and implementation.
 - Implementation of the D&A Suboxone program within the county which is serving 5 clients.
 - Partnering with Dr. Liggon for Suboxone programming in Fulton County.
 - Increased partnership with Managed Care to provide better services for public funded individuals.
 - Working with TMCA to develop a case management model that can be an MA/CBHNP reimbursable service
 - Planning for 2011 will include: discussions with Fulton County CJAB/Adult Probation regarding expansion of Restricted Intermediate Punishment to include Fulton County, Recovery Oriented Systems of Care (ROSC) model implementation that is meaningful and effective for our communities, impact reduction of Alcohol, Tobacco, and Other Drug (ATOD) use, develop satisfaction survey/program assessment and monitor recovery rates to adequately assess our program effectiveness.
-

TUSCARORA MANAGED CARE ALLIANCE

- Transitioned individuals displaced by the closure of a major Medicaid Mental Health Outpatient Provider to alternative Outpatient Providers. Sustained coordination for these individuals throughout the calendar year while developing a replacement Outpatient Clinic within Fulton County boundaries. We have noted decreased utilization of medication checks and initial psychiatric evaluations for both adult and child populations and will make a focused effort to increase access to psychiatry in the 2011 year.
- Hosted Human Services Training Days. This 2 day training/education opportunity was open to Fulton County Human Service Professionals. The training was free of charge.
- Received 137 satisfaction survey results from users of the Medicaid Behavioral Health System. Adult users of service scored their experience as a 4.1 satisfaction out of a possible 5.0 scale. Family respondents of children users of service scored their experience as a 4.2 satisfaction.
- There was increased utilization of users of behavioral health services between the ages of 0-18 by 11%, 16 people, while overall cost of service to this population trended down by approximately \$214,000. This decrease in cost trend was due to a decline in the use of higher levels of care including Inpatient, Therapeutic Staff Support and Partial Hospitalization. Conversely, there were increased utilization of OP therapy and Summer Therapeutic Activities Programs.
- Three additional behavioral health services were brought into the HealthChoices Service Compliment in Fulton County: School Based Outpatient; Summer Therapeutic Activities Program was located in Fulton County this year and Adult Peer Support Services

HUMAN SERVICES DEVELOPMENT FUND (HSDF)

The Human Services Development Fund is state-funded on a state fiscal year (July 1-June 30) and for both the FY 2009-10 and 2010-11, funding remained flat at \$50,000 for Fulton County.

These funds are utilized as follows in Fulton County:

- Huntingdon/Bedford/ Fulton Area Agency on Aging (AAA) for adult and aging services for transportation, personal care and home-delivered meals. AAA receives approximately 35% of the grant funding.
- Fulton County Partnership for transportation and coordination of services. The Partnership receives approximately 55% of the grant funding.
- Administration of the grant costs are approximately 10% of the grant funding.
- Approximately 41 clients were served with HSDF funds in FY 2009-10.

HOMELESS ASSISTANCE PROGRAM (HAP)

The Homeless Assistance Program is state-funded on a state fiscal year (July 1-June30) and for both the FY 2009-10 and 2010-11, funding remained relatively flat at \$17,733 for 2009-10 and \$17,765 for FY 10-11.

The funding is subcontracted to the Fulton County Catholic Mission and is used for:

- Homeless assistance (to pay rent for those facing eviction and for utility bills for those facing eviction). This represents approximately 96% of the grant.
- Emergency shelter (lodging vouchers at local motels for homeless or those in transition); this represents only about 1% of the grant.
- Administration – due to tough economic conditions, very little, or approximately 3% or less of the funds are used for administration.
- Approximately 142 clients were served with HAP funds in FY 2009-10

COMMUNITIES THAT CARE INITIATIVE

Although not under the direct supervision of Fulton County Human Services Administration, HSA is a key leader in the Fulton County Communities that Care (CTC) initiative. The county was awarded a CTC planning grant in 2010. Planning has been completed and a funding application for continuation of the grant was submitted at the end of the calendar year.

Communities That Care (Hawkins & Catalano, 1992) is a community-based program that engages community leaders and citizens in a broad-based prevention coalition. The goal is to reduce adolescent problem behaviors such as violence, drug and alcohol use, teenage pregnancy, school drop-out, and delinquency, and the promotion of positive youth development. Members of the coalition attend intensive trainings to learn how to bring relevant aspects of prevention science, such as risk and protective-factor focused prevention, to the community. The leaders carry out an assessment of risk factors in the community, and based on a prioritization of risk factors formulate and implement a plan to address those factors. The CTC model focuses on employing evidence-based strategies and programs in a coordinated fashion in order to reduce risk in the community.

During the CTC planning process, Fulton County identified the following risk and protective factors as a result of data gathered from the Pennsylvania Youth Survey (PAY) conducted in the county's three school districts.

Fulton County Risk Factors - According to the PAYS, the following are the four highest risk factors for Fulton County:

1. ***Laws and norms favorable to drug use*** - Overall, Fulton County students received a percentile score of 62 on the *Laws and Norms*, 12 points higher than the normative average of 50. This risk factor is measured by six items on the survey, such as “How wrong most adults in your neighborhood think it was for would kids your age to drink alcohol?” and “If a kid smoked marijuana in your neighborhood, would he or she be caught by the police?”
2. ***Perceived availability of drugs***- Overall, Fulton County students received a percentile score of 62 on the *Perceived Availability of Drugs* scale, 12 points higher than the normative average of 50. This risk factor is measured by four items on the survey, such as “If you wanted to get some marijuana, how easy would it be for you to get some?”
3. ***Perceived availability of handguns*** - Overall, Fulton County students received a percentile score of 76 on the *Perceived Availability of Handguns* scale, 26 points higher than the normative average of 50. *Perceived Availability of Handguns* is measured by the question “If you wanted to get a handgun, how easy would it be for you to get one?”
4. ***Community disorganization*** - Overall, Fulton County students received a percentile score of 76 on the *Community Disorganization* scale, 26 points higher than the normative average of 50. The *Community Disorganization* scale pertains to students’ feelings and perceptions regarding their communities and other external attributes. It is based on students’ responses to five items, four of which indicate a neighborhood in disarray (e.g., the existence of graffiti, abandoned buildings, fighting and drug selling). The fifth item is “I feel safe in my neighborhood.”

Fulton County Protective Factors – According to the PAYS, the following are the four highest scores indicating protective factors or areas of strength for Fulton County

1. ***School rewards for prosocial involvement*** - Overall, Fulton County students received a percentile score of 69 on the *School Rewards for Prosocial Involvement* scale, 19 points higher than the normative average of 50. This protective factor is measured by such statements as “The school lets my parents know when I have done something well.”
2. ***Family attachment*** - Overall, Fulton County students received a percentile score of 59 on the *Family Attachment* scale, nine points higher than the normative average of 50. This protective factor is measured by such items on the survey as “Do you share your thoughts and feelings with your mother?”
3. ***School opportunities for prosocial involvement*** - Overall, Fulton County students received a percentile score of 58 on the *School Opportunities for Prosocial Involvement* scale, eight points higher than the normative average of 50. This protective factor is measured by survey items such as “In my school,

students have lots of chances to help decide things like class activities and rules.”

4. ***Belief in the moral order*** - Overall, Fulton County students received a percentile score of 58 on the *Belief in the Moral Order* scale, eight points higher than the normative average of 50. *Belief in the Moral Order* is measured by items on the survey such as “It is all right to beat up people if they start the fight.”

The Risk- and Protective-Factor Assessment work group collected and analyzed data on Fulton County, and with input from the community board, they identified the following as priorities for community planning:

Risk factors

- *Laws and Norms Favorable to Drug Use (Community)* as measured by the construct “Parental Attitudes Favorable toward ATOD Use.”

Protective factor:

- *Family Rewards for Prosocial Involvement*

Problem Behaviors

- *Early and Persistent Antisocial Behavior (Individual and Peer Domain)* as measured by the prevalence of other antisocial behaviors
- *Early and Persistent Antisocial Behavior (Individual and Peer Domain)* as measured by the construct of Percentage of Youth reporting Bullying or Sexual Harassment on the Internet the past year.

To date, representation and “buy in” by all of the significant stakeholders in Fulton County for the Communities That Care Initiative has been encouraging. Committees have been formed to address specific project areas; meetings are well attended and momentum is growing. We hope to have much more to report regarding the efforts and successes of this initiative in the upcoming year.

This is the first annual report prepared and submitted by the Fulton County Human Service Administration. This process will be adopted as a yearly practice to be modified and enhanced as needed. Your input regarding content and other information of interest is appreciated. If you have feedback or suggestions, please contact Jean E. Snyder, Human Service Administrator at 717-485-3553 or at jsnyder@co.fulton.pa.us.